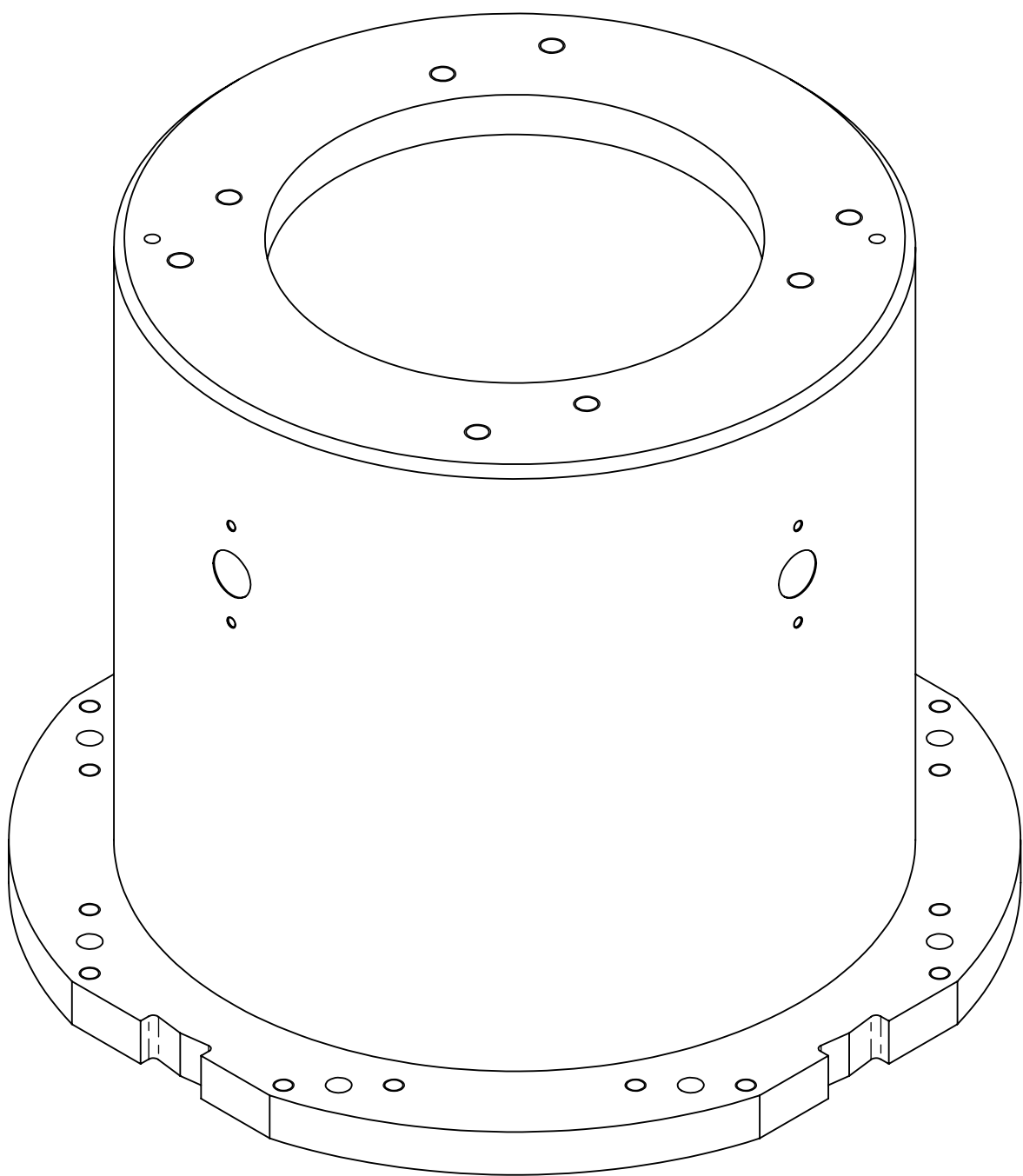
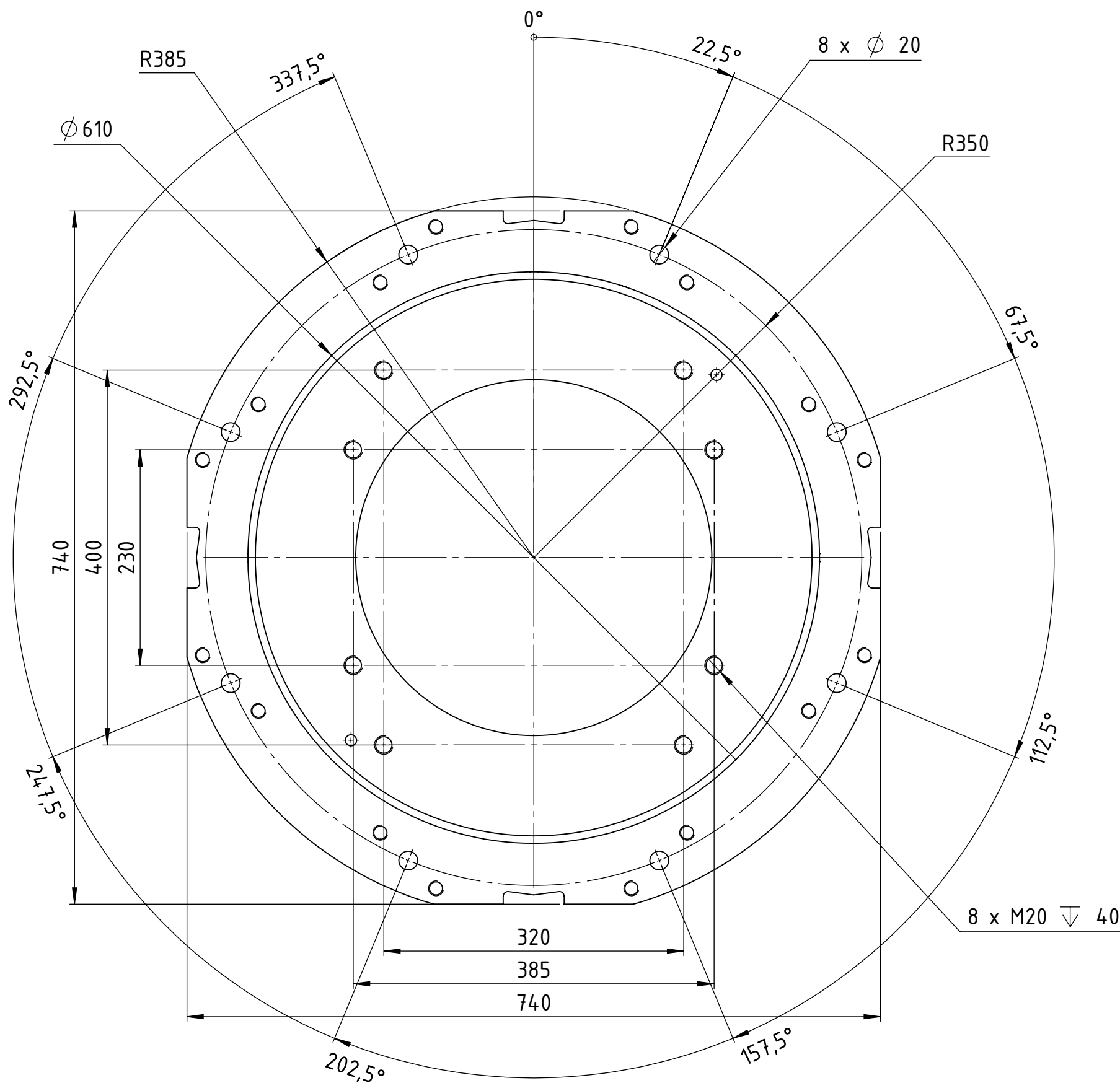
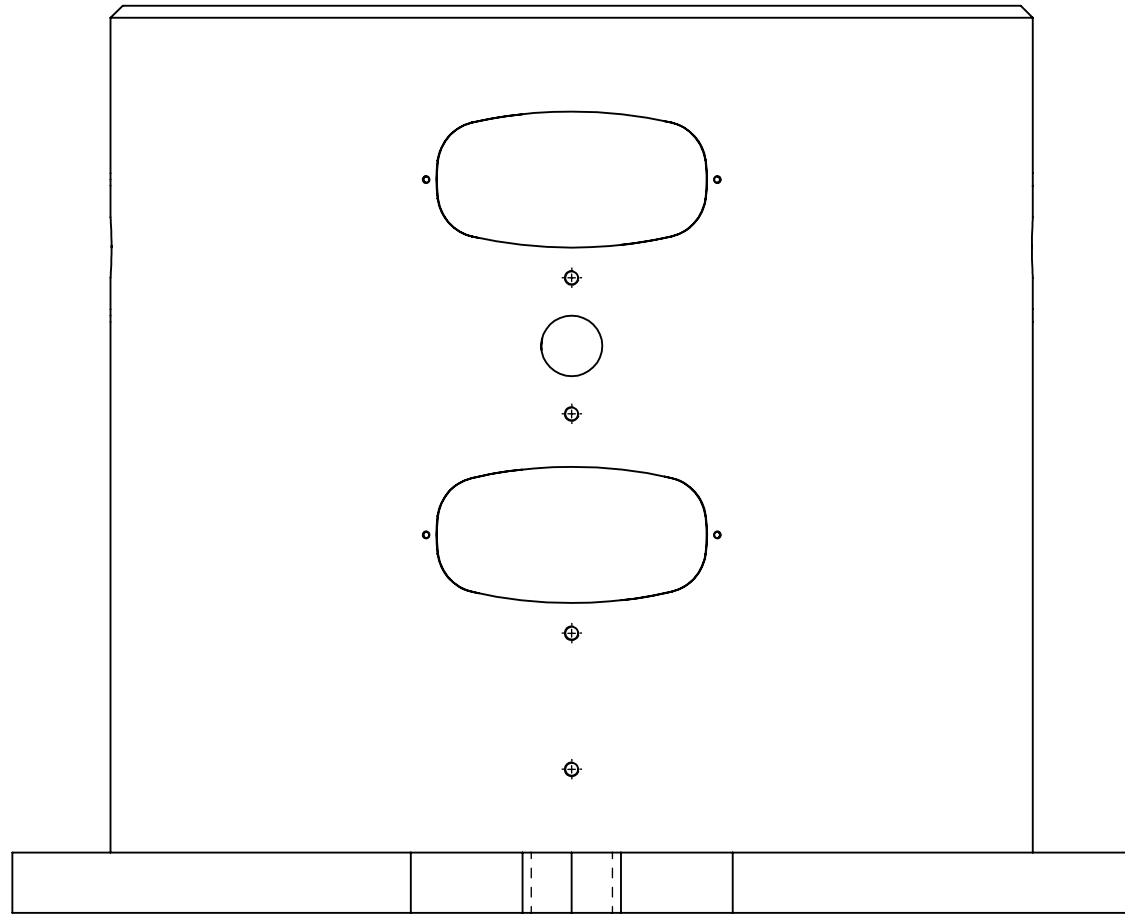
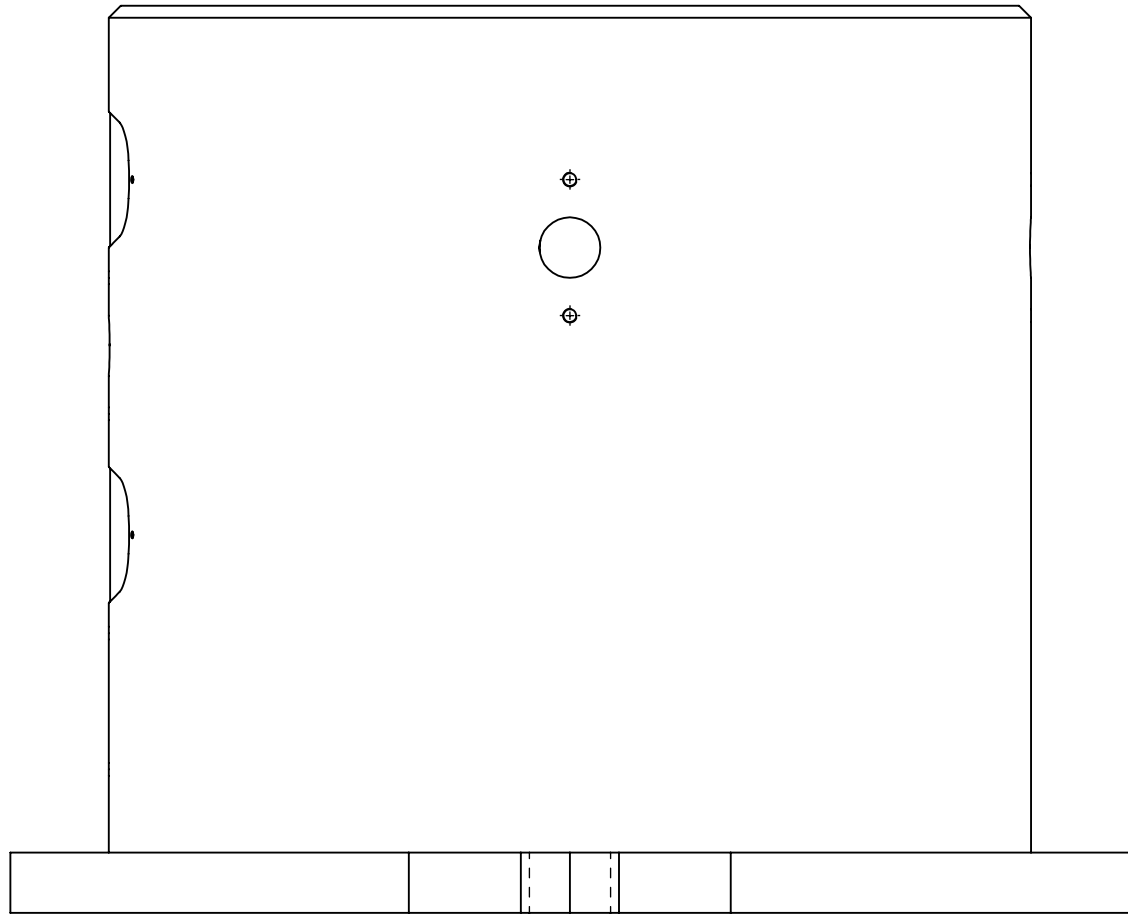
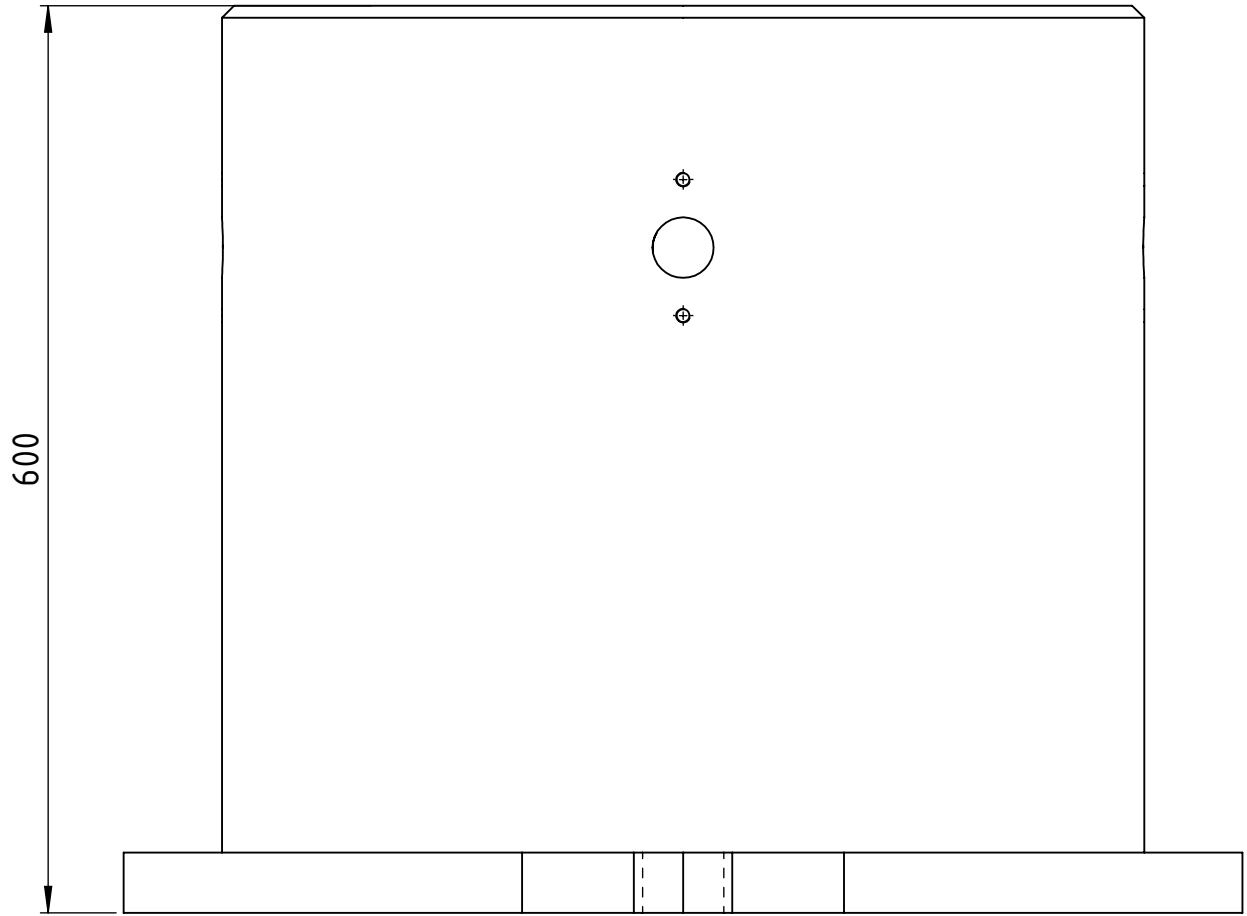
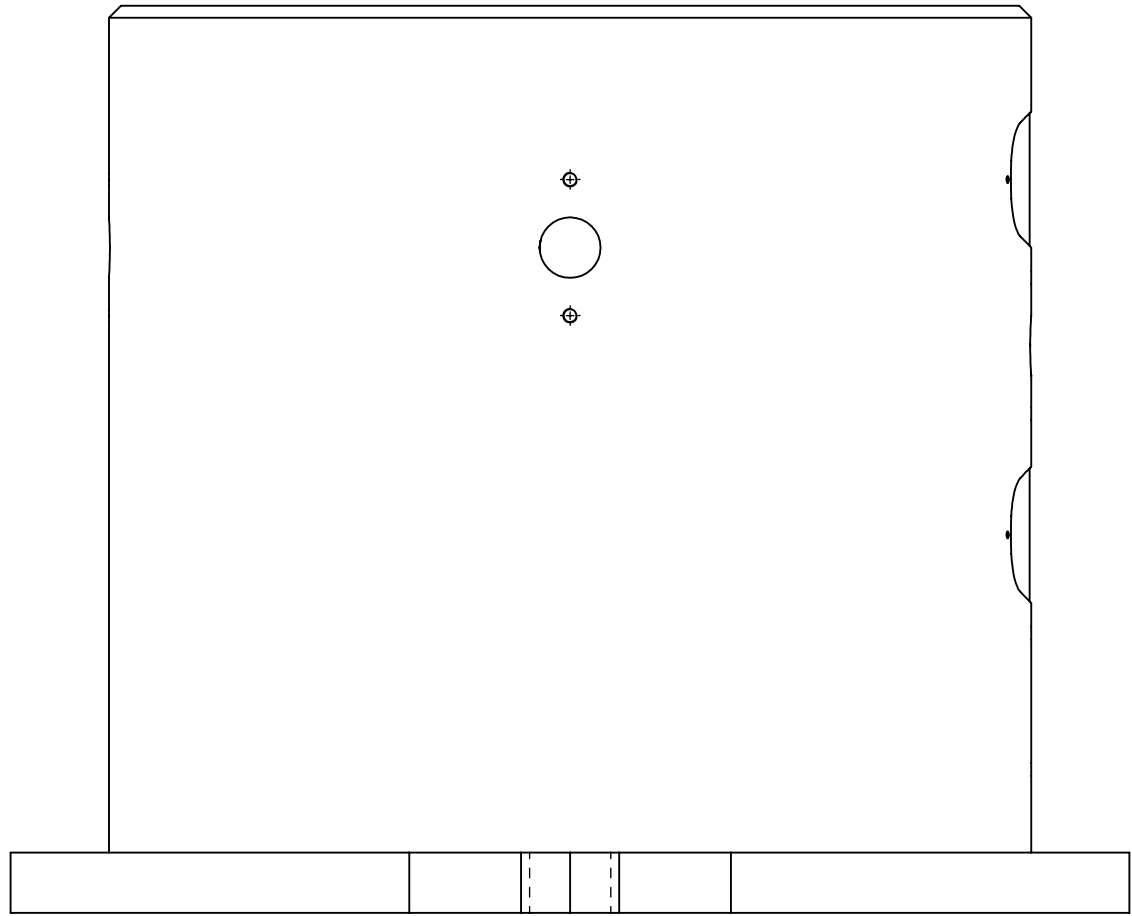


The reproduction, distribution and utilization of this document as well as the communication of its content to third parties without the written permission of Yaskawa Europe GmbH is prohibited. The payment of damages. All rights reserved in the event of a patent, utility model or design.



rev	revision text	rev date	rev by	appr. date	appr. by
01	modified tolerances	2022-07-10	MichNaeb	2022-07-10	MichNaeb
02	general simplification	2022-12-01	AndLoes	2022-12-01	MichNaeb

status: Released		SAP EMEA no: 222175		dimension: 145,4/21 kg	
where nothing else is indicated tolerances: DIN ISO 2768-mS welding: DIN EN ISO 15920-A no sharp edges		title / description: robot stand M-600		created: 2022-02-04 drawn: 2022-02-04 approved: 2022-02-07 drawing-no: 0000130136-100	
YASKAWA www.yaskawa.eu.com		weight: 145,4/21 kg		sheet: A1 15 4/5	