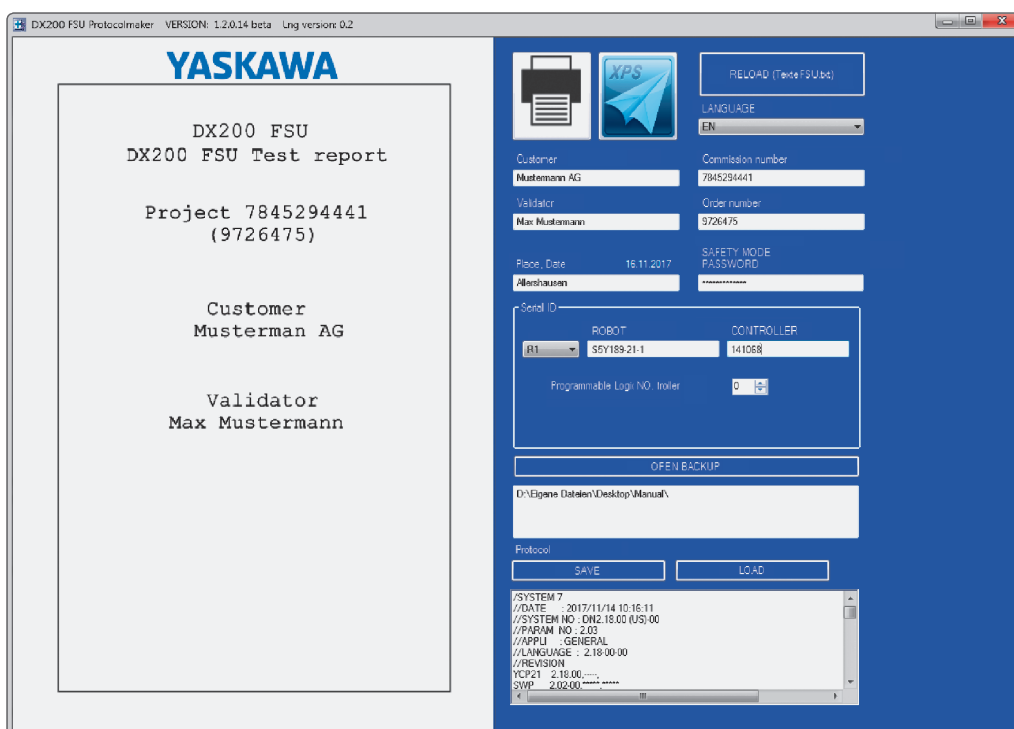


# FSU- Protocolmaker offline

Documentation Software  
for Functional Safety Controller



## Target group

This software is designed to be used by trained members of staff who are responsible for quality assurance, operation and system documentation for the functional safety controller of YASKAWA robot systems. The program is to be used to document the system status prior to first use, delivery and changes to safety-related data. This data can be used, for example, as proof/documentation of the relevant status of the FSU settings at the point of creation.

## KEY BENEFITS

- Creation of a complete FSU protocol file containing all data relating to safety
- Standardised format for recording safety-related data
- Ease of reading the data
- Documentation of responsible personnel
- Huge time savings thanks to the automated creation of FSU protocol files based on an FSU data backup

